



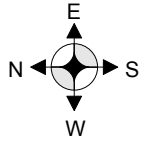

■ All Entry points and Exits points must be cleared at all times, also fire extinguishers and hoses

■ No Items to be affixed to any walls or fixtures

■ Any external electrical equipment being brought into the Melbourne Town Hall must be tested and tagged

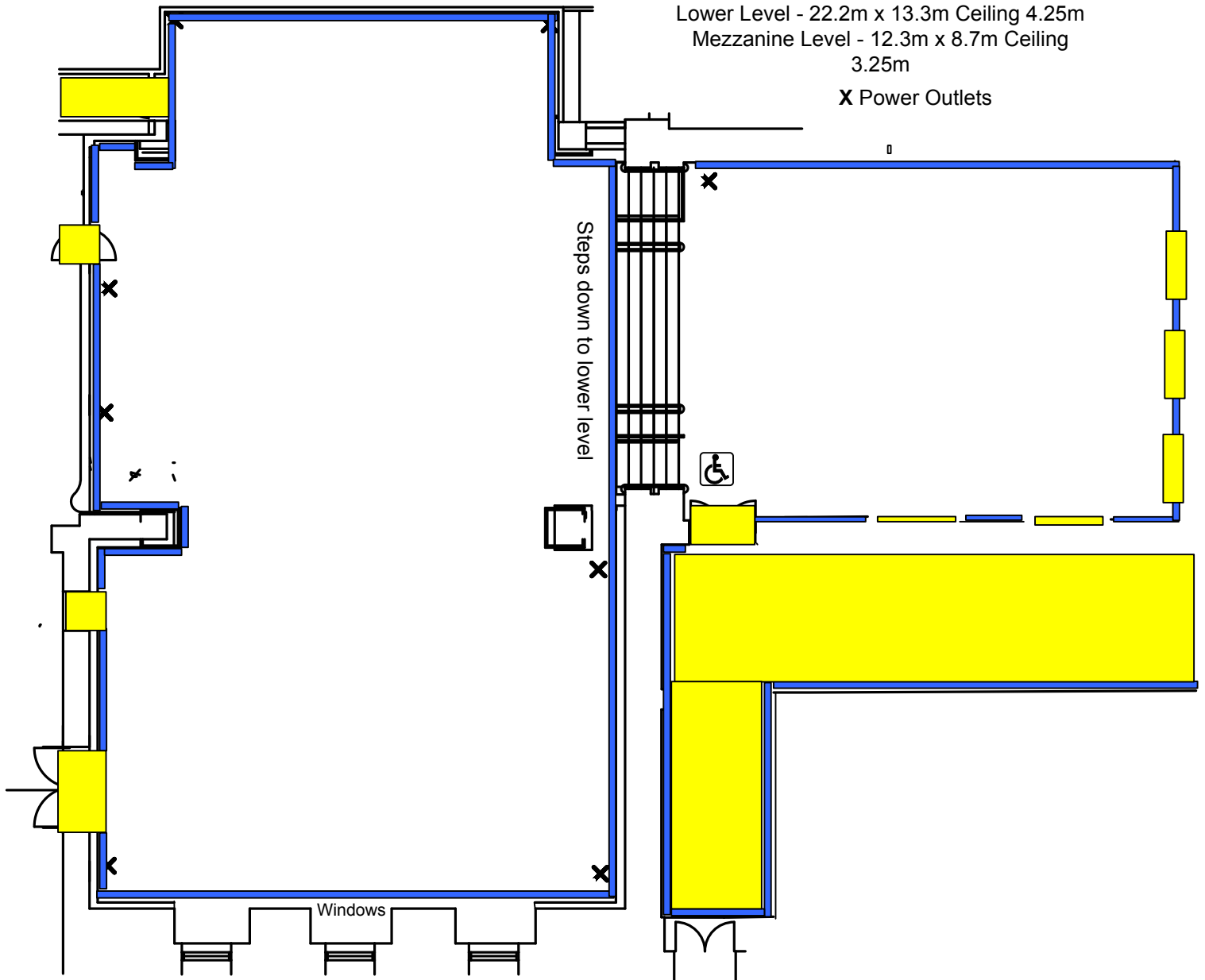
■ No external catering is to be brought into the venue

Safety is a priority at all times

Client:		
Venue: Swanston Hall - Ground Floor		
Date:		 Scale: 1mm : 150 mm

Swanston Hall Dimensions:
Lower Level - 22.2m x 13.3m Ceiling 4.25m
Mezzanine Level - 12.3m x 8.7m Ceiling 3.25m

X Power Outlets



Entrance from Swanston Street - Copper Doors